

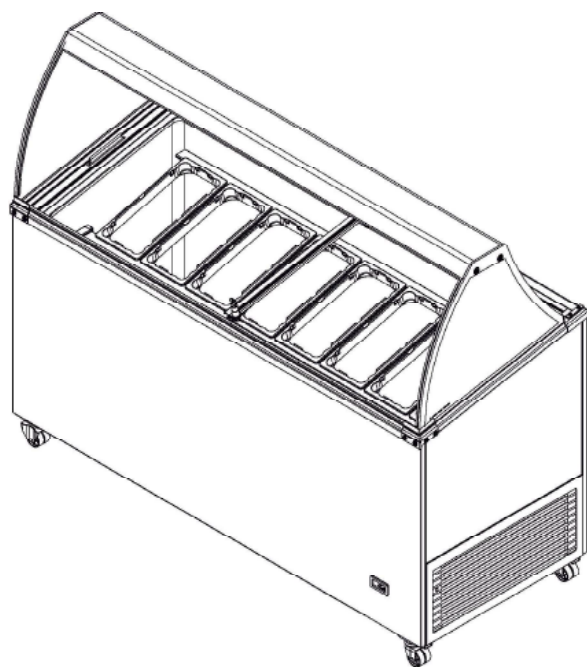


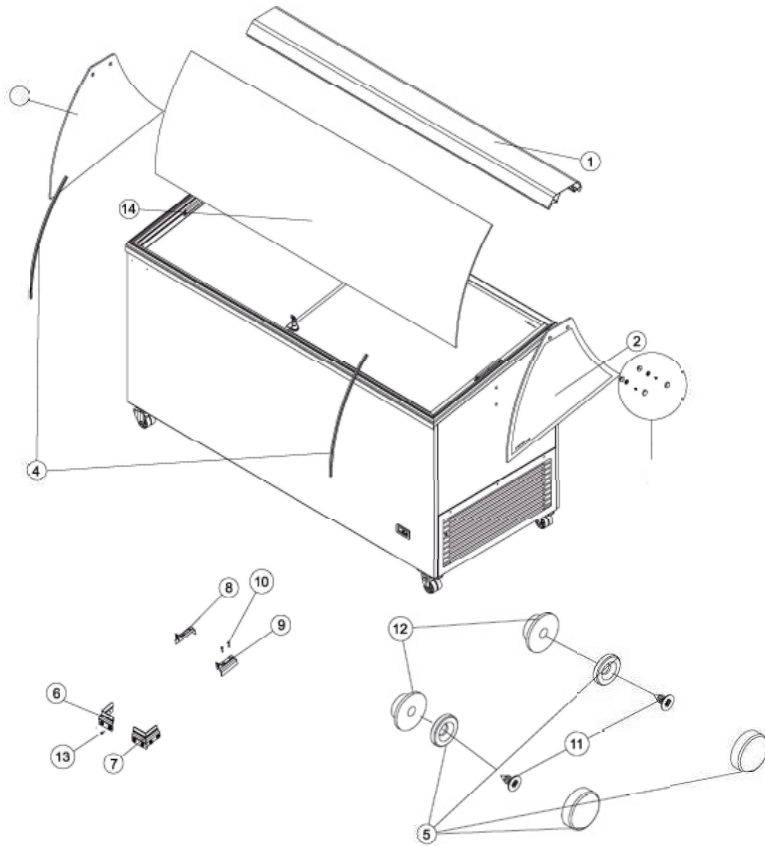
**MANUALE DI ISTRUZIONI  
USER GUIDE**

**ICE 7 - ICE 8**

**MONTAGGIO VETRI  
UPPER GLASS SHOW CASE GROUP  
INSTALLATION INSTRUCTION**







N.	Nome	Quantità
1	Profilo alluminio vetro superiore	1
2	Vetro laterale sinistro	1
3	Vetro laterale destro	1
4	Guarnizioni vetro laterale	2
5	Display Group Glass Cap	4
6	Angolare posteriore fissaggio vetro curva e laterale destro	1
7	Angolare posteriore fissaggio vetro curva e laterale sinistro	1
8	Profilo anteriore fissaggio vetro laterale destro	1
9	Profilo anteriore fissaggio vetro laterale sinistro	1
10	Viti 4,2x22 e 4,2x25	4
11	Rondelle	4
12	Distanziali/asole fissaggio vetro laterale con profilo in alluminio	4
13	Viti 3,9x13	8
14	Vetro curvo	1



Immagine 1



Immagine 2

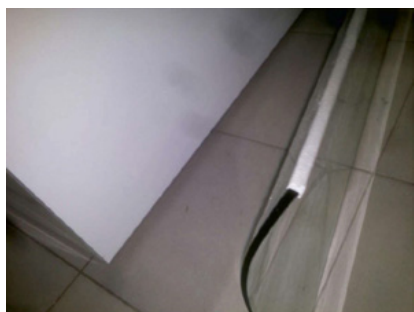


Immagine 3

Applicare la spugna adesiva

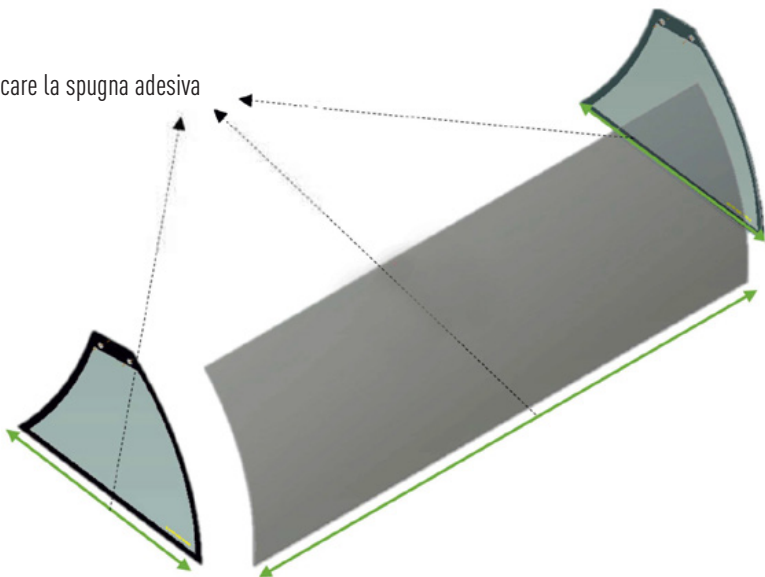




Immagine 4



Immagine 5

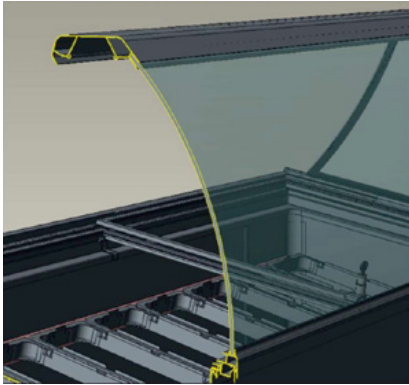


Immagine 6

Inserire nei vetri laterali le asole/rondelle e fissarli con il profilo in alluminio

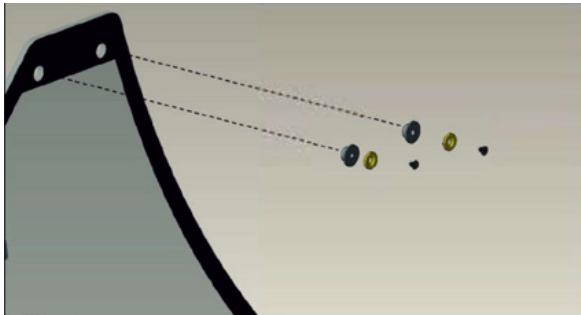


Immagine 7

**ATTENZIONE!**

Usare le viti 4,2x25mm

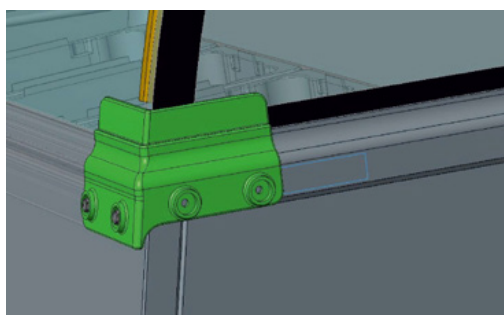
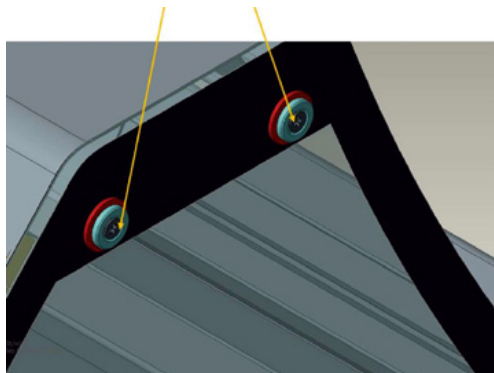


Immagine 8

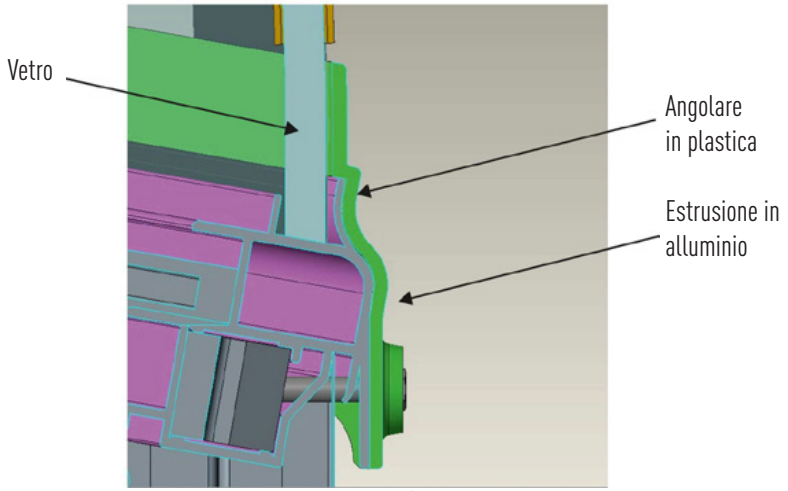


Immagine 9

Fissare i profili in plastica anteriori

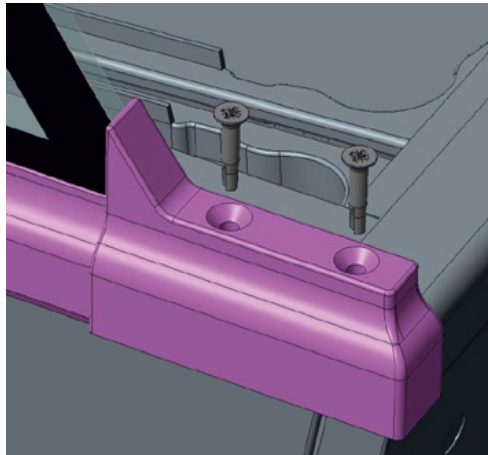


Immagine 10

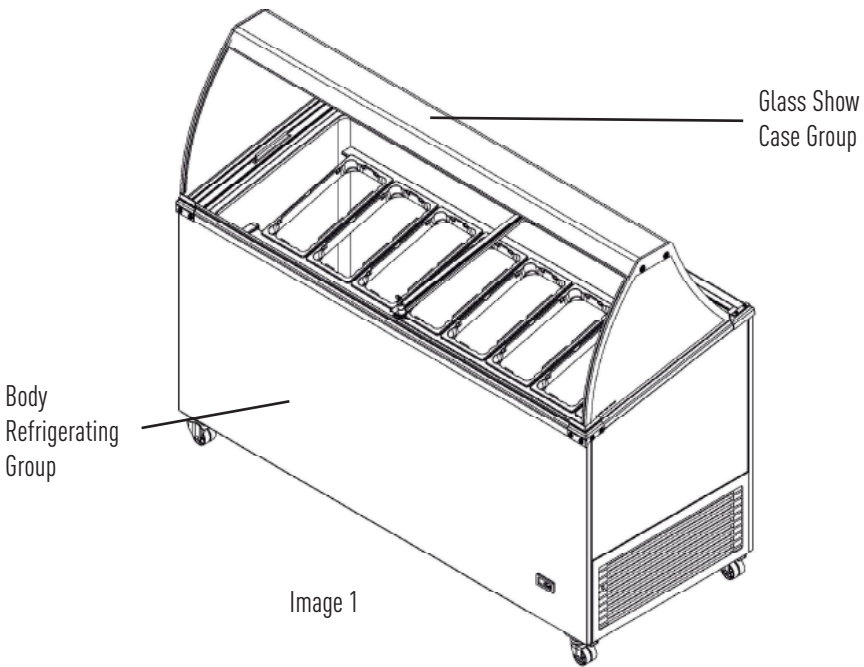


## CONTENT

1. Glass Show Case Overall View
2. Necessary Equipments for the Installation
3. Glass Show Case Group Parts
4. Installation Steps

### 1. Glass Show Case Overall View

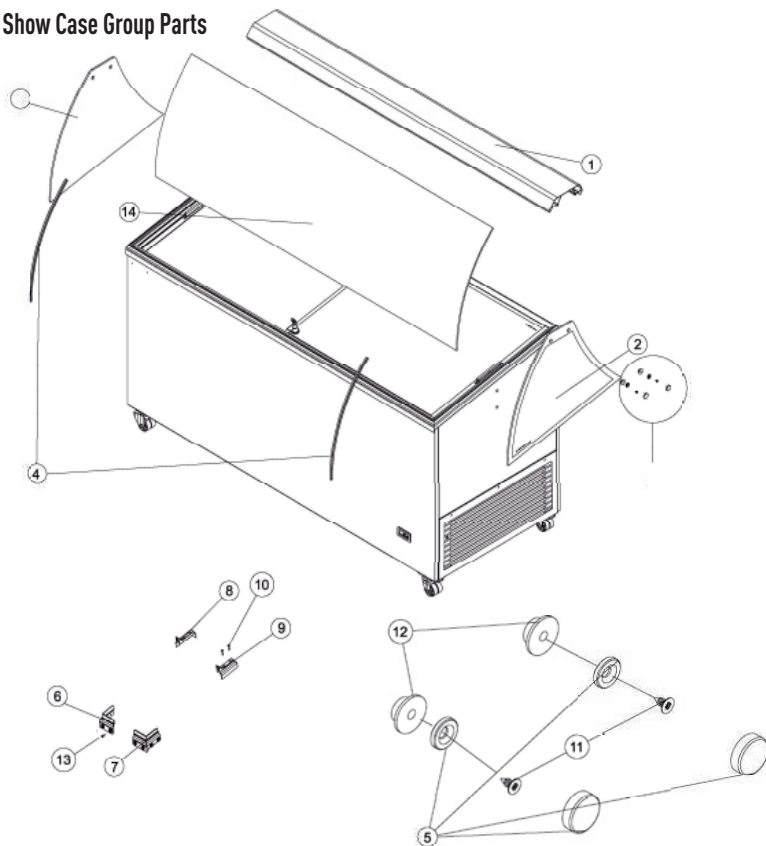
Final view of the refrigerator after the installation of the ice cream refrigerator glass show case is shown in Image-1.



### 2. Necessary Equipments for the Installation

1. Chargeable or Electrical Drill
2. 3mm Drill Bit
3. Cordless Screwdriver

## 3. Glass Show Case Group Parts



N.	Part Name	Quantità
1	Glass Fixation Al Glass Profile	1
2	Right Glass	1
3	Left Glass	1
4	Glass Gasket	2
5	Display Group Glass Cap	4
6	Curved Glass Reinforcement Left	1
7	Curved Glass Reinforcement Riahrt	1
8	Side Glass Fixation Left	1
9	Side Glass Fixation Riohl	1
10	SCREW ST 4,2X22 YHB DRILL BIT ZN	4
11	SCREW ST 4,2X25 YHB BLACK GEOMET	4
12	Glass Fixation Bushing	4
13	SCREW ST 3,9X13 RYSB DAKROMET DRILL BIT	8
14	Front Curved Glass	1

#### 4. Installation Steps

##### a. Stripping of Inox Sheets' Labels

Inox sheets of the product is sent with pvc coating in order to prevent scratching. Pvc coatings (if any) on the inox sheets should be stripped and made ready for the customer's usage.

##### b. Grouping of Glasses

Before the start of grouping of the glasses, single-sided adhesive foams inside the display group are applied to the bottom of the glasses, adhesive side of the foam should face to the glass. The foams should not be seen when the glasses are placed into the frame.

Yellow gelatine of the foams will be stripped and adhered at the bottom surfaces of the glass. This will be applied as seen in image-1.

Glasses will be seen as in image-2 after the application of the foam.

Single-sided adhesive foam will be applied to the curved glass in the same way, adhesive side of the foam should face to the glass and should be centered. The application is shown in image-3. CAUTION:



Image 1



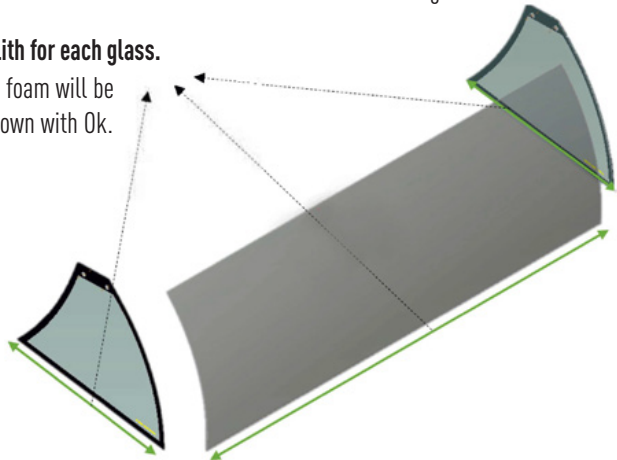
Image 2



Image 3

#### Foam application must be monolith for each glass.

One-sided adhesive foam will be applied on areas shown with Ok.



Firstly, No.4 glass gasket should be placed at the left and right sides of the front curved glass. This gasket will prevent the contact of the glasses. Glass gasket which is applied to the left side of the curved glass is seen in image-4. Grouped view of the curved and side glasses is seen in Image-5.

**CAUTION: Glass gasket should be placed to the glasses properly. They shouldn't cause thickening, it should be seen as in image-4.**



Image 4

Foam of the lower parts of glasses will look as in image 5 after gaskets of the curved glasses are placed. Upper extrusion is mounted properly on the curved glass while glasses are held in a stable manner in this way. Insertion detail and installation of the aluminium profile are seen in image 6.

**CAUTION: Glasses are fragile materials, therefore this process should be handled carefully. Be sure that glass gaskets are not displaced during assembly.**



Image 5

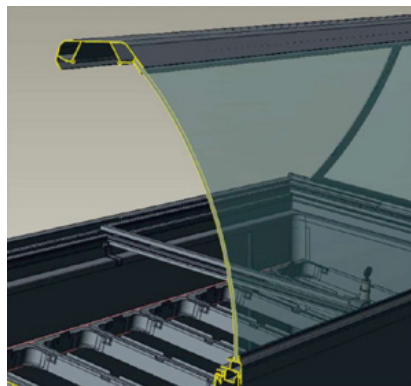
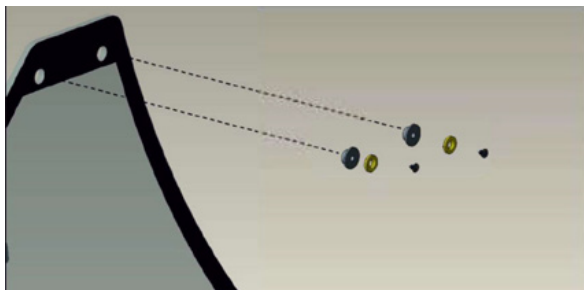


Image 6

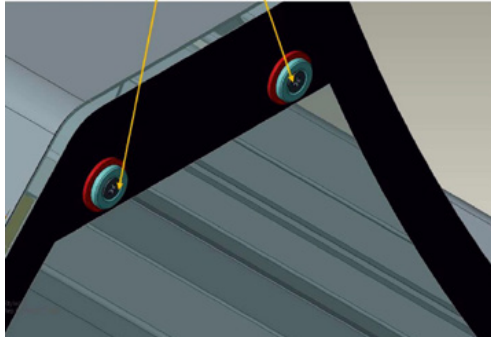
As it is seen in Image-7, assembly of fixation bushing and washing should be performed with 4,2x25mm YHB geomet screw for both right and left glasses.

Image 7



**ATTENTION!**

4,2x25mm YHB geomet black screws will be used here. Drill bit screws should not be used here.



After this process metallic caps are rotated clockwise and screws are hidden.

**c. Installation of Plastic Parts**

As it is seen in Image-8, after the plastic parts are aligned the holes that will be screwed should be made by 3 mm drill bit properly.

After this, the installation will be performed with SCREW\_ST\_3,9x13\_RYSB\_DAKROMET\_DRILL\_BIT.

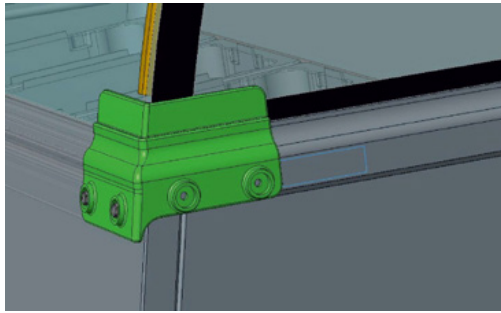


Image 8

Cross section detail after installation should be seen as in image-9.

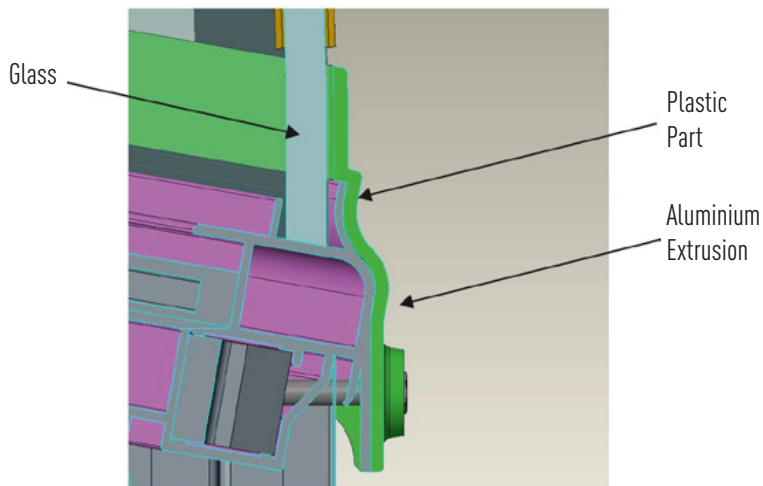


Image 9

Fixation plastic profile and glass of side glasses will be fixed as seen in the image. After the holes are made by 3 mm drill bit, SCREW\_ST\_4,2X22\_YHB\_DRILL\_BIT\_ZN screw should be used for assembly. This process should be performed for both left and right plastic parts.

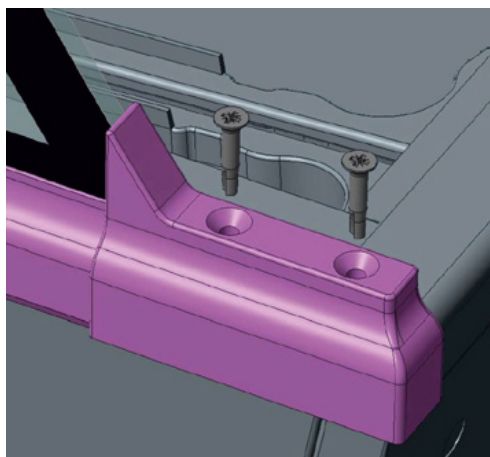
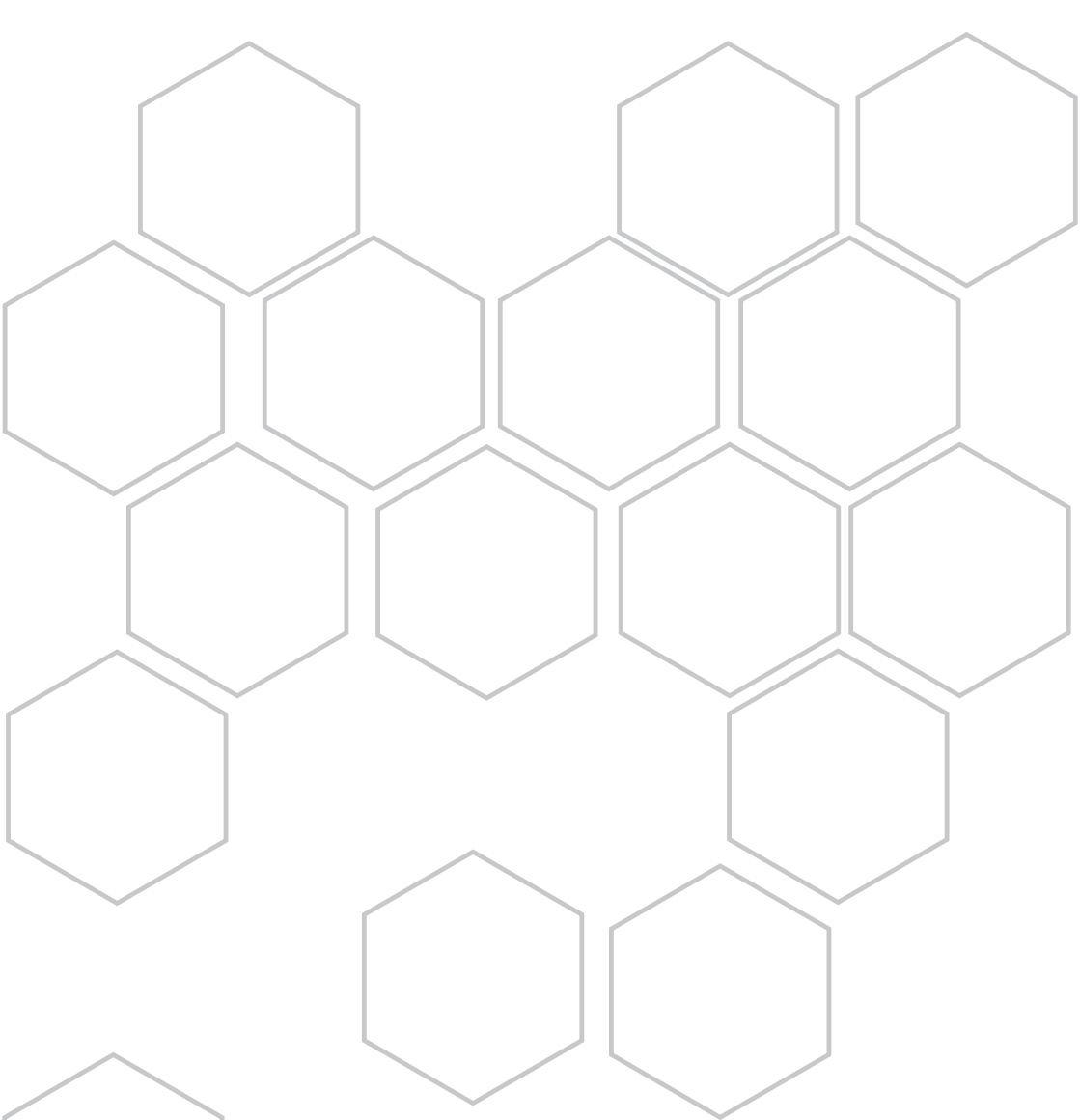


Image 10



La MITO srl Distribuzione srl  
Via della tecnica e dell'innovazione, 7/9/11- Z.I. | 70015 Noci - Bari - ITALY  
Tel. +39 080 497 1444 | +39 080 497 2902 | Fax +39 080 494 9182  
info@klimaitalia.it

**[www.klimaitalia.it](http://www.klimaitalia.it)**