

# CONGELATORI A POZZO

## CHEST FREEZER



### FRP 300 PSSL

Congelatore statico a pozzo - porta cieca scorrevole.  
Static chest freezer with solid sliding lids.



### FRP 400 PSSL

Congelatore statico a pozzo - porta cieca scorrevole.  
Static chest freezer with solid sliding lids.



### FRP 500 PSSL

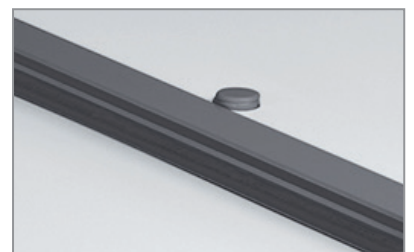
Congelatore statico a pozzo - porta cieca scorrevole.  
Static chest freezer with solid sliding lids.



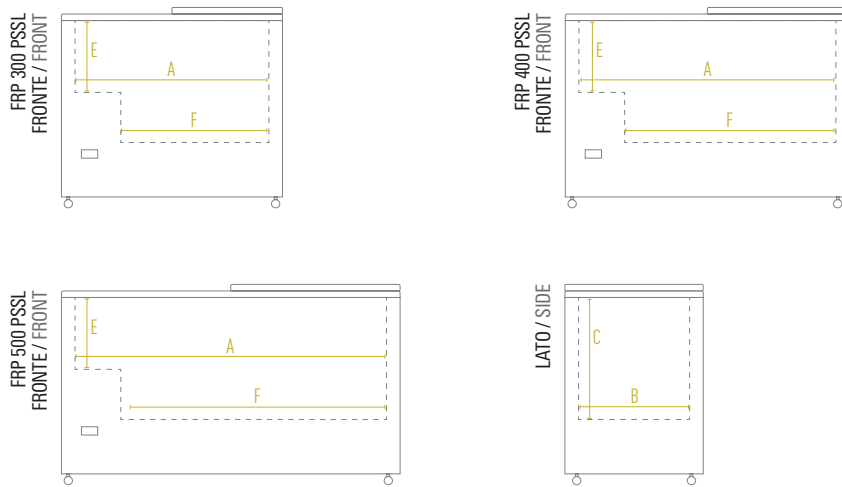
Porte cieche scorrevoli  
Solid sliding lids



Termometro digitale  
Digital thermometer



Chiave e serratura  
Lock and key



Dimensioni mm / Dimensions mm	FRP 300 PSSL	FRP 400 PSSL	FRP 500 PSSL
Dimensioni Esterne (LxPxH) / External Dimensions (WxDxH)	1063 x 670 x 895	1283 x 670 x 895	1503 x 670 x 895
Dimensioni Imballo (LxPxH) / Packaging Dimensions (WxDxH)	1120 x 730 x 922	1340 x 730 x 922	1560 x 730 x 922
A - Larghezza / Width	1140	1140	1140
B - Profondità / Depth	527	527	527
C - Altezza / Height	670	670	670
E - Altezza Minima / Min. Height	430	430	430
F - Larghezza Minima / Min. Width	620	840	1060
Adesivo Laterale Destro / Side Right Sticker	630 x 750	630 x 750	630 x 750
Adesivo Laterale Sinistro / Side Left Sticker	630 x 490	630 x 490	630 x 490
Adesivo Frontale / Front Sticker	1050 x 750	1270 x 750	1490 x 750

Caratteristiche Tecniche / Technical Features	FRP 300 PSSL	FRP 400 PSSL	FRP 500 PSSL
Temperatura / Temperature Range	-22 °C / -9 °C	-22 °C / -9 °C	-22 °C / -9 °C
Classe Climatica / Climate Class	5	5	5
Volume Netto-Lordo / Net-Gross Volume	Lt. 256 / 304	Lt. 327 / 387	Lt. 398 / 470
Superficie Esterna Body	Lamiera preverniciata con trattamento anticorrosione Prepainted sheet with anticorrosion treatment	Lamiera preverniciata con trattamento anticorrosione Prepainted sheet with anticorrosion treatment	Lamiera preverniciata con trattamento anticorrosione Prepainted sheet with anticorrosion treatment
Superficie Interna Inner Liner	Lamiera preverniciata bianca con trattamento anticorrosione White prepainted sheet with anticorrosion treatment	Lamiera preverniciata bianca con trattamento anticorrosione White prepainted sheet with anticorrosion treatment	Lamiera preverniciata bianca con trattamento anticorrosione White prepainted sheet with anticorrosion treatment
Termometro / Thermometer	Digitale / Digital	Digitale / Digital	Digitale / Digital
Regolatore temperatura / Controller	Elettronico / Electronic	Elettronico / Electronic	Elettronico / Electronic
Rumorosità / Noise level	dB 54	dB 54	dB 54
Spessore isolamento / Insulation thickness	mm 70	mm 70	mm 70
Sbrinamento / Defrost	Manuale / Manual	Manuale / Manual	Manuale / Manual
Chiave e serratura / Lock and key	Si / Yes	Si / Yes	Si / Yes
Ruote-Piedi / Castors-Feet	4 Ruote / 4 Castors	4 Ruote / 4 Castors	4 Ruote / 4 Castors
Peso Netto-Lordo / Net-Gross Weight	Kg 54 / 59	Kg 57 / 63	Kg 60 / 67
Voltaggio / Voltage	V 220-240	V 220-240	V 220-240
Frequenza / Frequency	Hz 50	Hz 50	Hz 50
Refrigerante / Refrigerant	R600A	R600A	R600A
Assorbimento / Absorption	W 135	W 190	W 190
Consumo Energia / Energy Consumption	KwH/24H 2,23	KwH/24H 2,58	KwH/24H 2,92